



FSI Technologies Inc.

668 Western Avenue • Lombard, IL 60148-2097

(630) 932-9380 • FAX: (630) 932-0016

www.fsinet.com

FSI Product and Engineering Updates- Summer 2014

Featuring the latest from FSI Technologies including NeuroCheck and EyeVision Technology (EVT).

NeuroCheck Compact Smarter Camera

The new smarter vision camera "NeuroCheck Compact" combines camera and PC technology inside a small rugged IP67 protection class metal housing. Features an Intel Atom Processor, Windows Embedded Standard 7, and NeuroCheck 6.0 Professional.

The self-contained vision system provides industrial grade inspection capability. Available in a wide range of models to cover all vision application areas. Now you can run the same interface across your entire factory, on smart cameras and PC based vision applications, offering complete scalability. [Read more....](#)



RazerCam- New Smarter Camera with FPGA for High Speed Machine Vision

The RazerCam by EVT (EyeVision Technology) is a fast smart camera with a user programmable FPGA, which allows data to be processed in real time. Because the FPGA is available to the user, even complex applications such as contour matching can be directly processed. Based on the XILINX ZYNQ SoC, the camera comes equipped with two ARM Cores. The RazerCam series is available in three sensor options: a 0.4 MPixel matrix sensor, 3.0 MPixel matrix sensor, or a 4k line scan sensor.

[Read More....](#)



Kwangwoo RIB 40-12 Solid Shaft Encoders- Available only from FSI

Features:

Small Compact Size: only 40 mm in diameter

Single Channel or Quadrature

Wide Ranging Applications

High Resolutions: up to 2500 PPR -

High Frequency Response

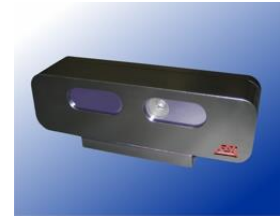
Low Cost – single units [available on line](#) starting at \$139.



High performance & rugged.
7000 RPM, 50G, 200KHz
A, B, Z with diff. line driver.

3-D Imaging: A Practical Overview for Machine Vision

Read this informative article on the strengths and weaknesses of using 3D imaging in Machine vision, written by FSI's Fred Turek and Kim Jackson. It is featured in the March 2014 issue of Quality [Magazine/Vision & Sensors](#).



New from EVT: Efficient Bottle Inspection with EyeSens

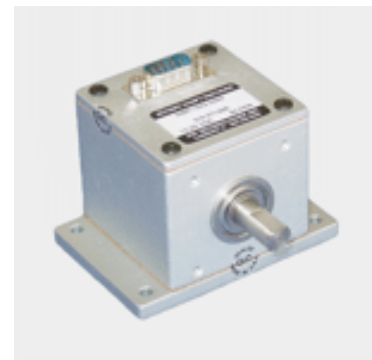
In the beverage industry, as well as the food industry as a whole, the necessity to meticulously inspect products is ever increasing. To meet these demands, many facilities will have to refit older production lines with modern measurement and testing equipment. An ideal solution is the development of smart cameras and vision sensors.

The EyeSens Family of vision sensors by EVT are perfect in retro-fit situations, as well as new production lines. With its compact housing of 65 x 45 x 45 mm, the EyeSens contains the lens and LED light sources. In addition, there is a C-Mount version. [Read more.....](#)



MBR Rotary Shaft Encoder

The MBR Series optical shaft encoder represents a major price - performance breakthrough. Built with the same legendary FSI quality to provide long life and durability. Prices start at \$99. Available as single or quadrature output and can be used to derive RPM, feet per minute and angular position. When used with simple controls, material can be cut to length and over and under speed conditions detected. The MBR package with its easy mounting and standardized connector is designed to meet the demands of industry and its price, the goals of the OEM. [Read more....](#)



Machine Vision Classes Scheduled

Our popular machine vision classes, MVC 201 and MVC 204 have been scheduled for August 13-14-15. These are hands-on classes that are held in the Chicago area, or we can customize classes for your specific application with an on-site visit. For more information about these services, to sign up for a class, or to schedule a class tailored to your needs, give us a call or visit <http://www.fsinet.com/Training-Overview.htm>.

Feedback: For questions about our products and services, call 630-932-9380.