

Version 5.1

**for Microsoft® Windows®
9x / NT / 2000 / XP**

**Getting
Started**

Information in this document is subject to change without notice. No part of this document may be reproduced or transmitted in any form or by any means, electronic or mechanical, for any purpose, without the express written permission of NeuroCheck GmbH.

© 2003 NeuroCheck GmbH. All rights reserved.
Version 5.1 of June 04, 2003

NeuroCheck is a registered trademark of NeuroCheck GmbH.

Microsoft, MS-DOS, Windows, Windows NT, are either registered trademarks or trademarks of Microsoft Corporation.

IBM is a registered trademark of International Business Machines Corporation.

Intel, Pentium are registered trademarks of Intel Corporation.

FireWire is a trademark of Apple Computer Inc.

Contents

Introduction	7
Chapter 1 NeuroCheck Overview	9
What is NeuroCheck?	9
Application Areas.....	10
Code Identification.....	10
Presence and Assembly Verification	10
Optical Character and Pattern Recognition.....	11
Image Comparison	11
Gauging.....	11
Robot Guidance.....	11
Color Processing	12
Surface Inspection.....	12
Basic Check Routine Structure	13
Check Routine.....	13
Individual Check	13
Check Function	13
Modes of Operation.....	14
Manual Mode	14
Live Image Mode	15
Automatic Operation and Screen Configuration	15
User Interface	16
User Guidance.....	16
Automatic Configuration	17
„Short Ways“.....	17
Chapter 2 Getting Help	19
Printed Documentation.....	19
Online Help	19
Reference Information	20
Context Help	21
Help for check function parameters	21
Status Messages	22
Other Help Resources	22
Web Resources	23
Product Support.....	23
Chapter 3 Installing NeuroCheck	25
System Requirements.....	25
Before Installation	25

Installation Procedure	26
Determining User Information.....	26
Choosing the Installation Directory	26
Selecting the Setup Type.....	27
Selecting Additional Components	28
Copying Files	29
Completing the Installation.....	29
Additional Tools.....	29
After Installation	30
Start Menu.....	30
A First Test.....	31
Executing a Sample Check Routine.....	31
Hardware Configuration.....	32
Installing Special Hardware Components.....	32
Setting up Hardware	32
Removing NeuroCheck.....	34
Chapter 4 Creating a New Check Routine	35
Inspection Task.....	35
Creating the Check Routine	35
Check Routine Description	36
Saving the Check Routine.....	36
Creating and Editing Checks	37
Image Acquisition	37
Transferring the Image.....	37
Setting Parameters	38
Parameters for Image Transfer.....	39
Executing the Image Transfer	39
Regions of Interest	40
Unavailable Functions.....	40
Define Region of Interest.....	41
Thresholding	42
Display Options	42
Searching for the Pills.....	43
Checking the Number of Pills.....	44
Automatic Execution.....	45
Triggering Check Routine Execution.....	45
Switching to Automatic Mode	46
Automatic Mode Screen	46
End Automatic Mode.....	47
From Here	47
Index	49

Introduction

Welcome to NeuroCheck 5.1, the leading machine vision and quality control system for Microsoft Windows. With NeuroCheck, you have chosen a professional software product designed from years of practical experience and used in thousands of industrial applications.

This guide helps you to get started with NeuroCheck. It introduces you to the software and its installation, explains the first steps for creating a machine vision application with NeuroCheck, and shows you how to get comprehensive information about the system.

This *Getting Started Guide* is organized as follows:

- Chapter 1 provides an overview of the general concept of the system and the main areas of application.
- Chapter 2 contains information on how to get assistance for your work with NeuroCheck.
- Chapter 3 defines the system requirements for NeuroCheck and describes the installation procedure.
- Chapter 4 gives you a quick guide on how to construct visual inspection applications with NeuroCheck.

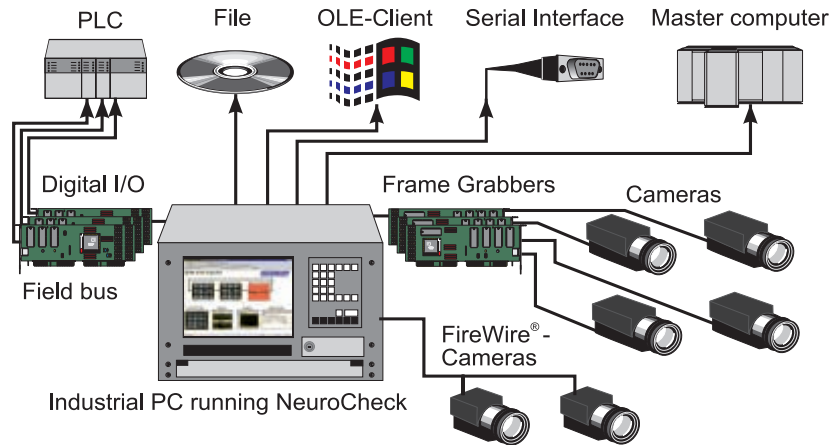
CHAPTER 1

NeuroCheck Overview

This chapter gives an overview of the application areas and the basics of NeuroCheck.

What is NeuroCheck?

NeuroCheck is a universal image processing system designed for use within automatic production processes and quality management systems. It offers an integrated environment for the interactive configuration of visual inspection applications and their automatic execution on the manufacturing line. The following figure shows the basic setup of a visual inspection system with the required hardware components and communication connections.



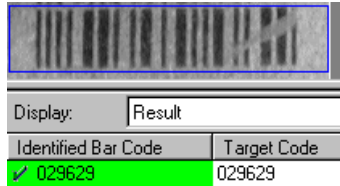
With its broad selection of image processing functions, NeuroCheck can be used in a wide range of application areas. Highly automated check routine configuration and an intuitive graphical user interface help to solve visual inspection problems.

NeuroCheck's communication abilities include remote-control by digital I/O, field bus and serial interface as well as generating complete inspection records by writing results to file or transmitting them via serial interface. NeuroCheck also supports OLE Automation, which is fast establishing itself as a new standard in process automation. This makes NeuroCheck ideally suited for today's highly integrated production processes and modern quality management systems.

Application Areas

This section gives a brief introduction to typical visual inspection tasks NeuroCheck can be used for. You will find examples for all these application areas on the NeuroCheck Web site <http://www.neurocheck.com> and in the reference book *Industrial Image Processing* published by Springer Verlag (Berlin Heidelberg New York), which presents solutions from all areas of industrial visual inspection created with NeuroCheck.

Code Identification



Examples for bar code identifications abound in all industrial areas, as different types of bar codes are used for the identification of all kinds of products in packaging, logistics, manufacturing control... NeuroCheck reads all common bar codes with contrast levels as low as 5%, forward and backward as well as in horizontal or vertical direction and even rotated.

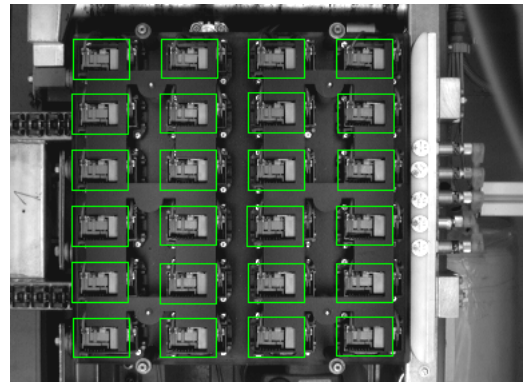
The two-dimensional DataMatrix code offers higher storage capacity than conventional bar codes and increased robustness through the advanced ECC-200 method for error correction. NeuroCheck's highly configurable DataMatrix identification function detects and decodes DataMatrix codes at any angle of rotation, in negative or positive print and under difficult surface conditions.



Presence and Assembly Verification

Use NeuroCheck to detect the presence of all required parts and components easily and reliably. Examples for this type of application are:

- Check presence of connector pins.
- Check number of tablets in a blister or the completeness of packaging contents in general.
- Check circuit board components.
- Check correct injection mold of plastic parts.
- Inspect work pieces for damage (using appropriate measurements).
- Check presence of screws, contacts, markings, inscriptions etc.
- Check fill level and correct closure of bottles.



Optical Character and Pattern Recognition

NeuroCheck uses adaptive classifiers for character recognition. They can be trained to recognize characters in arbitrary fonts, created by every marking technology used in the industry, for example laser-engraving, stamping, printing ...

Combined with NeuroCheck’s versatile image processing functionality, this technology can be used for a wide variety of recognition tasks, including for example company logos or special codes.

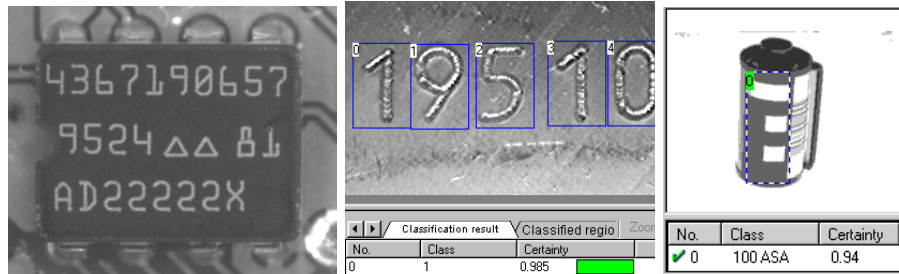


Image Comparison

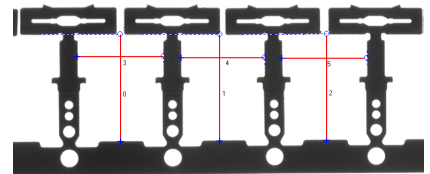


The most typical application of image comparison methods is print quality inspection. In contrast to optical character recognition, the objective here is checking the quality of the print by evaluating the correspondence of the print to a reference image.



Gauging

You can use NeuroCheck to check every aspect of the geometry of a work piece, e.g. distances between objects, angles between edges, parallelism, concentricity... Special subpixel algorithms allow for measuring with an accuracy of up to 1/10th of an image pixel.



Robot Guidance

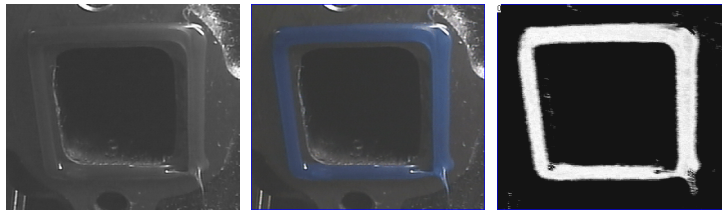
The term ”Robot guidance” summarizes all applications in which an image processing system is used to determine the position and orientation of an object and outputs this position in order to enable another machine to handle the object. A robot gripper can thus be enabled to grab work pieces from a conveyor belt. Another application is palletizing or depalletizing of crates containing assembly parts, packages or bottles.

Color Processing

Processing of color images in NeuroCheck is based on an intelligent matching process which can be customized for the specific requirements of each application. This allows color images to be analyzed with field-proven gray level algorithms and the speed and ease-of-use customary in NeuroCheck. This is especially interesting, if

- Objects have to be distinguished based on their color, e.g. electronic components or LEDs.
- Segmentation of the objects is not possible in the gray scale range because they do not exhibit a brightness contrast.

An example for the second case is shown below. The presence of sealing agent is to be tested. It does hardly differ in brightness from the surface of the test piece, as shown in the left image. A color image (center, as can be seen in the PDF version of this *Getting Started Guide*) allows for a clear distinction which can be exploited by the NeuroCheck conversion algorithm whose result is shown on the right.



Surface Inspection

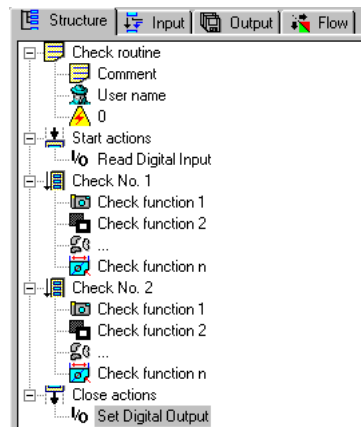
Surface inspection applications frequently use line-scan cameras to scan the surface of large or cylindrical parts in order to check for scratches, holes, rough areas etc. Using line-scan cameras in NeuroCheck is just as simple as using area-scan cameras. The same image processing functionality is available, shown here for gauging and defect detection on the surface of a cylindrical part.



Basic Check Routine Structure

This sections explains some basics of the structure of visual inspections in NeuroCheck.

Check Routine



The check routine is the fundamental element in NeuroCheck. It comprises the complete visual inspection of one work piece. A check routine typically consists of several individual checks inspecting different aspects of the work piece. The final result of a check routine, i.e. the statement, whether the work piece is good or faulty, is derived from the results of the individual checks.

The following image shows the entire hierarchy tree of a check routine with several individual checks, start and end actions and check functions. The individual elements of the tree are explained in more detail in the following sections.

Individual Check

Individual checks (or simply: checks) inspect different aspects of a work piece. A check might measure a bore hole, verify the presence of a component or read a line of characters. After all checks for a work piece have been carried out, their results are combined to form the final result of the check routine.

Checks are independent of each other, they do not exchange data. Usually checks are executed in the order in which they appear in the check routine. However, it is also possible to execute a check depending on the result of some other check, i.e., the "O.K." or "not O.K." result of a check can be used to decide which check to perform next. This is configured on the **Flow** page of the check routine tree view shown above. The sequence of checks in the tree view can be altered by simply dragging checks to a new position with the left mouse button pressed.

Check Function

Check functions are image processing, communication or system functions that can be inserted into a check to carry out specific tasks. NeuroCheck provides check functions for various tasks, such as filtering entire images, searching and measuring individual objects, reading from or writing to digital I/O connectors etc.

The check functions of a check are executed in sequence. They exchange data through the data pool of the check. Usually a check function gets its input data from the preceding function, but this assignment can be changed on the **Input** page of the check routine tree view shown above. The parameters of every check function can be set individually in a parameter dialog, giving extensive visual assistance to the user.

Modes of Operation

This section explains the different modes of operation in NeuroCheck.

Manual Mode

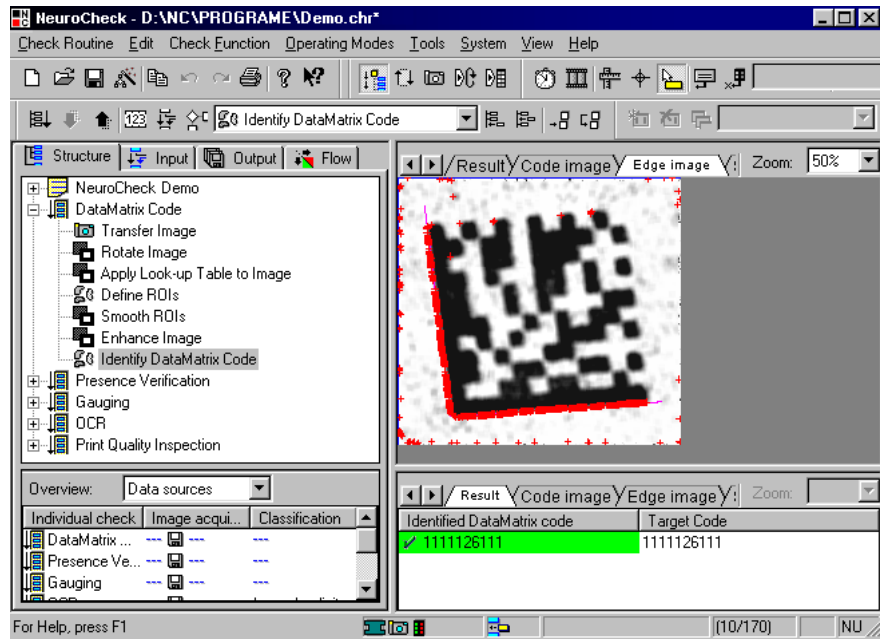


In manual mode you construct check routines, set check function parameters and test the inspection. Chapter „Creating a New Check Routine” gives an introduction to the process of building a check routine in manual mode.

Manual mode is entered by clicking the icon depicted on the left or by choosing **Manual** from the **Operating Modes** menu. It shows the check routine tree view on the left with its five edit pages:

- **Structure:** for appending, inserting and configuring individual checks and check functions.
- **Input:** for viewing and configuring the exchange of data between check functions.
- **Output:** for viewing and configuring result data output to peripherals.
- **Flow:** for viewing and configuring conditional execution of individual checks.
- **Documentation:** for describing the check routine, individual checks and check functions.

Below the tree view, an overview of various vital check routine properties and statistics can be activated by choosing **Check Routine Overview** from the **View** menu.

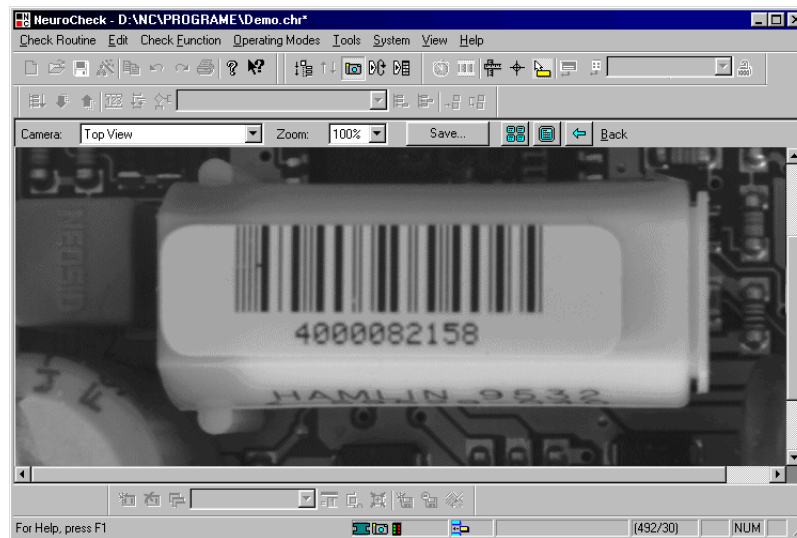


On the right, manual mode shows the result of the last check function executed or various other types of status information. The right window pane can be split to show different types of results simultaneously.

Live Image Mode



„Live image mode“ is entered by choosing **Live** from the **Operating Modes** menu. In this mode the complete NeuroCheck window is used to display the live camera image with adjustable zoom levels for easy focusing.



Automatic Operation and Screen Configuration



In automatic mode, NeuroCheck is typically controlled from the outside, for example by a PLC via digital I/Os or serial interface or by another program through OLE automation. Automatic operation is started by clicking the icon on the left or by choosing **Automatic** from the **Operating Modes** menu. Options for automatic mode include:

- Start of check by keystroke, timer or external signal.
- Check routine switching upon external signal.
- Display of adjustment dialog for adjusting camera positions upon external signal.
- Report of result data to PLC or master computer.

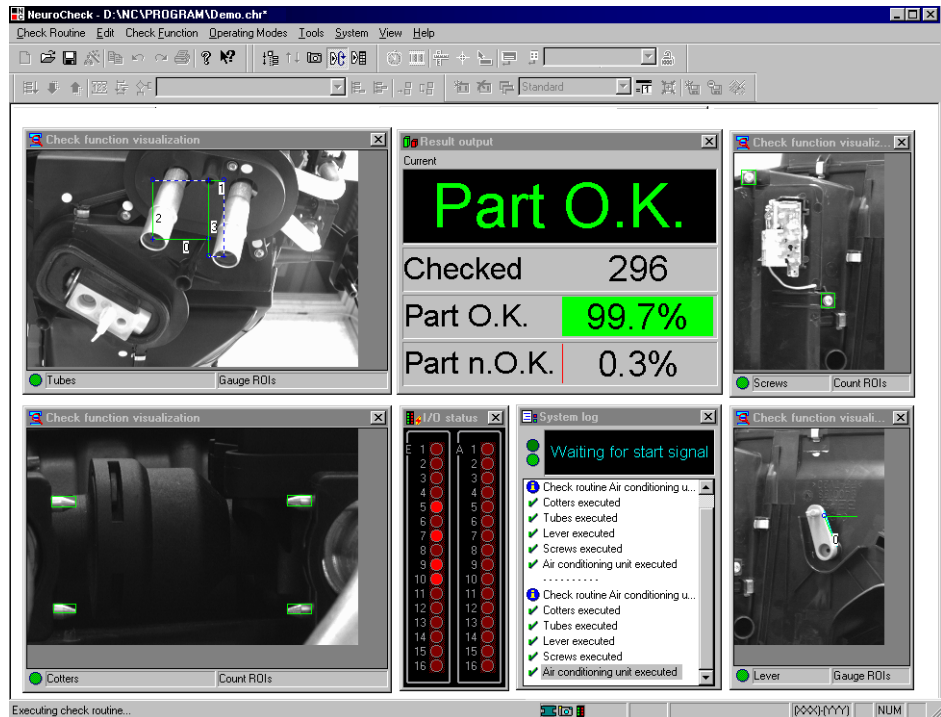
General configuration options for external control and communication are set by choosing **Remote Control** from the **System** menu. Other options, like output of result values, are specific to each check routine.



The appearance of the NeuroCheck screen in automatic mode is highly configurable. Below, we show an example of an application specific screen layout. Screen configuration is performed in Automatic Screen Configuration mode, entered by choosing **Configure**

Automatic Screen from the **Operating Modes** menu or by clicking the icon on the left. Since the screen configuration depends on the functions available in the check routine and their respective result displays, it is again specific for each check routine.

The image shows an example for an automatic screen with four inspection windows, a windows displaying result statistics, a monitor window for digital input/output connections and a system protocol.



User Interface

The user interface has been designed with two goals in mind: making the use of digital image processing as simple as possible while giving the experienced user full access to all features. These goals have been achieved by a highly automated configuration system combined with intuitive control elements for the comprehensive set of options available.

User Guidance

Context sensitivity is a very important element of user assistance. NeuroCheck permanently checks what actions are possible at any given moment when editing check routine structure or setting parameters. It will make available only operations that are actually possible at this point. For example, it is not possible to insert a check function into the check routine unless all the data required by the function is available. This prevents errors caused

by an interrupted flow of data through the program. NeuroCheck will also display a hint in the **Select New Check Function** dialog box explaining why a function cannot be used at that point and what is required prior to using it.

Automatic Configuration

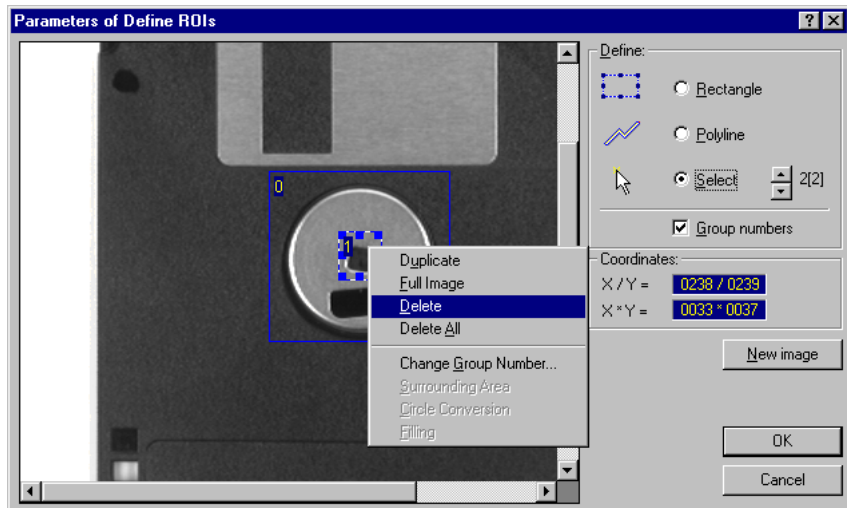
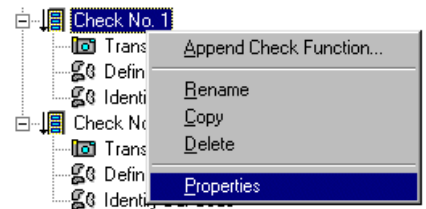
Check functions are automatically connected according to the results already available; this guarantees consistent data structures. Many times preset parameters giving good results for a wide range of applications eliminate the need for manual configuration.

„Short Ways“

The NeuroCheck user interface adheres closely to the Windows standard with its emphasis on context sensitivity and visual guidance, e.g. through the use of graphical sliders for parameter adjustment.

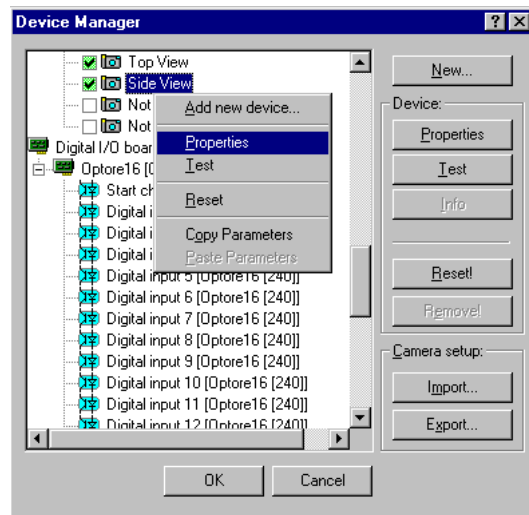
Right mouse button. The right mouse button is used extensively throughout the NeuroCheck user interface for setting properties of the currently active object. For example:

- Check routine descriptions: right-click the check routine name in the tree view.
- Individual check settings: right-click the name of the check in the tree view.
- Adding, deleting and configuring check functions: click functions in the tree view.
- Settings for individual regions of interest or groups in graphical parameter dialogs: right-click the selected region/group in the graphical display of the dialog



In accordance with the Windows user interface guidelines, the right mouse button never initiates an action directly, it always opens a context menu. This makes it safe and easy to experiment with the right mouse button.

Alternative controls. In many cases, several ways achieve the desired effect. For example, in the **Device Manager** dialog box, properties for the devices can be set by choosing the Properties button or from the context menu of the device. Most check function dialogs also offer control elements for direct access to the most important parameters, whereas the right mouse button leads to additional options for individual objects.



“In-place editing”. Names of checks and check functions in the check routine tree view, camera inputs and digital communication channels in the **Device Manager** Explorer can be edited just like file names in the Windows Explorer. Click the item once with the left mouse button to select it, then a second time to start editing.

Getting Help

This chapter will show you how to get assistance while you work with NeuroCheck. It explains how to make use of built-in help features of the program, how to access resources on the World Wide Web, and whom to contact for technical support.

Printed Documentation

Premium and Professional editions of NeuroCheck are accompanied by comprehensive printed documentation, including

- This *Getting Started* guide.
- The *User-Manual* with detailed references to all modes of operation, communication interfaces, check functions etc. in NeuroCheck.
- The *Training Course* which will lead you step by step through the process of configuring visual inspection applications, from bar code reading to gauging, from presence verification to optical character recognition.
- The *Operator Manual* is primarily written for operators and set-up people working with NeuroCheck visual inspection stations.
- The *Programmer's Reference* detailing the various programming interfaces enabling you to customize NeuroCheck and extend its functionality.

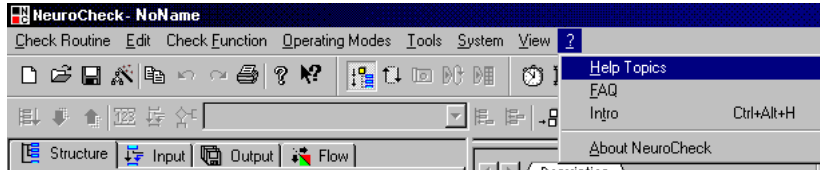
Additional technical information about visual inspection systems, image processing algorithms, image capturing and illumination, can be found in our reference book *Industrial Image Processing*, published by Springer Berlin Heidelberg New York (ISBN 3-540-66410-6).

Online Help

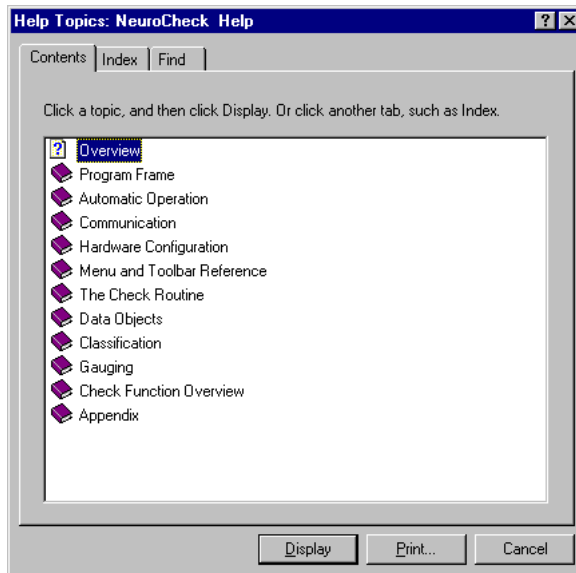
The online help system provides the information you need where and when you need it: directly on the machine while you are working with NeuroCheck. There are several ways of accessing online help information relating to different types of information and different work situations.

Reference Information

The online help system offers an extensive amount of reference information about NeuroCheck's modes of operation, communication facilities and check functions. Reference information is typically accessed through the **Help** menu.

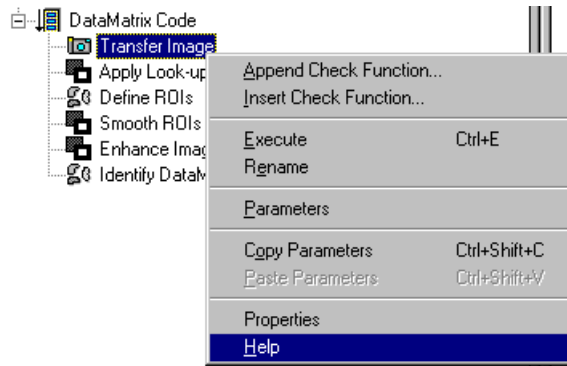


The **Help Topics** command displays the **Contents/Index** tab with the hierarchical table of contents of the help system. Its chapters provide information on all areas important for working with NeuroCheck.



The most extensive section of the help system is the check function reference explaining the operation and parameters of every check function used to build visual inspection routines in NeuroCheck. Since this information is frequently needed when configuring check

routines, it can be reached directly from the context menu of the check functions in the check routine tree view.



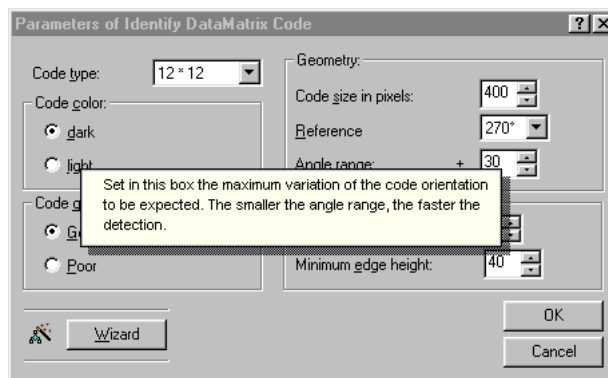
Context Help

The NeuroCheck help system also provides context-sensitive help for the elements of the user interface. For example, pressing the F1 key on a highlighted menu command displays help for that particular command with hyperlinks to further information. Context-sensitive help is also accessible for toolbar commands by first clicking the help button shown on the left, then the toolbar button in question.



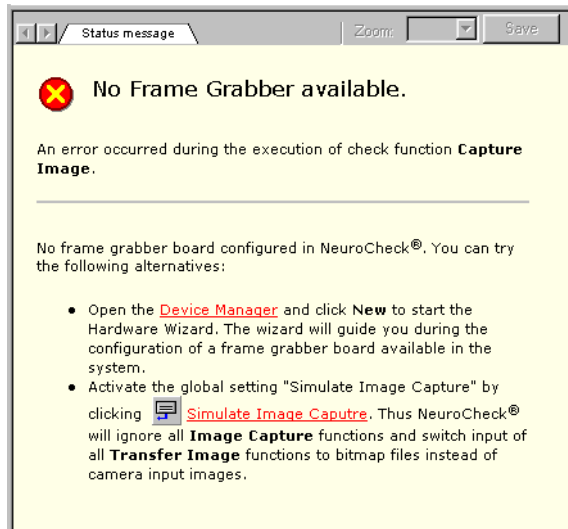
Help for check function parameters

Probably the most important type of context help is help for check function parameters. This help information is accessed using the help button in the title bar of the parameter dialog boxes. Clicking this button first, any control element inside the dialog box next, opens a popup window explaining the corresponding parameter setting. Without interrupting your work flow you can immediately check the meaning of the parameter and its effect on your inspection routine.



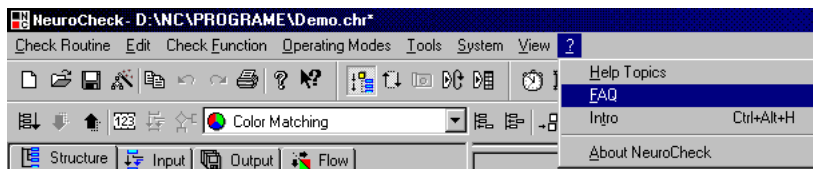
Status Messages

Another very important means of providing help related to the current context of your work are the status messages given by check functions during development of a check routine in manual mode. All status messages issued by check functions in NeuroCheck are displayed in the familiar HTML format and use its navigational features to make your work with NeuroCheck even simpler. The error message of function **Capture Image** shown below informs the user about possible causes of the error and offers direct links to the **Simulate Image Capture** command and the **Device Manager** to correct the problem immediately.

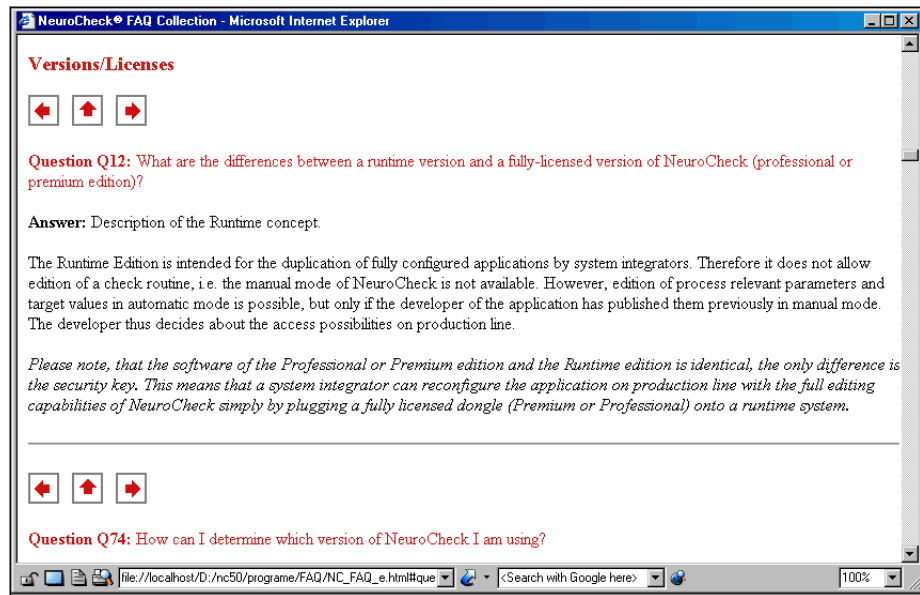


Other Help Resources

A standard installation of NeuroCheck includes our list of frequently asked questions (FAQ) with a host of tips and tricks collected from daily work with NeuroCheck, covering different system setups, hardware combinations, inspection tasks etc. Choosing **FAQ** from the **Help** menu opens this collection in your favorite web browser.



The hierarchical structure of the FAQ, sorted by typical actions performed in NeuroCheck and by functionalities facilitates finding the required information quickly and easily.



Web Resources

The FAQ list also provides direct links to our web site <http://www.neurocheck.com> where you will always find the latest version of this list together with manifold information on industrial image processing with NeuroCheck.

Product Support

If neither documentation nor web resources provide a solution for your particular problem, contact your local NeuroCheck support office. The preferred method of contact is via email as this enables content-rich information about problems and solutions, frequently including test images and check routines.

Germany

NeuroCheck GmbH
 NeuroCheck TechSupport
 Neckarstr. 76-1
 71686 Remseck
 Phone: +49 (0) 7146 89 56 0
 Fax: +49 (0) 7146 89 56 29
 Email: support@neurocheck.com

United Kingdom and Ireland

Industrial Vision Systems Ltd.
Vision House
Charlton Village Road
Wantage
Oxfordshire
OX12, 7HE
England, UK
Phone: +44 (0) 1235 227295
Fax: +44 (0) 1235 227576
Email: support@industrialvision.co.uk

Other Countries

Please refer to our web site <http://www.neurocheck.com> for information about local support offices in other countries.

Installing NeuroCheck

This chapter guides you through the installation process of NeuroCheck and shows you the first configuration steps.

System Requirements

Installing and using NeuroCheck requires a PC running Microsoft Windows. NeuroCheck's system requirements are the following:

- Operating system: Windows 9x / Windows NT 4.0 (ServicePack 3 or higher) / Windows 2000 / Windows XP,
- IBM® Personal Computer or fully compatible,
- SVGA Monitor and graphics adapter (preferred resolution 1024*768, true color),
- Pentium processor or better (preferably Pentium III or later),
- 32 Mbytes of main memory (128 Mbytes recommended),
- Free hard disk space (depending on the amount of installed sample files): At least 80 Mbytes, approx. 140 Mbytes for a complete installation),
- CD-ROM drive.

This configuration is sufficient for using NeuroCheck as a development system in an image processing laboratory. Applying NeuroCheck as a completely automatic inspection system requires the following additional components:

- FireWire camera or frame grabber board with camera.
- Digital I/O board, field bus board or serial interface for communication with PLC or master control computer.

Information on how to configure NeuroCheck for using these hardware components is given later in this chapter.

Before Installation

First, please connect the security key (dongle) to the USB or parallel port of your PC. The installation program does not need the key, but if you want to test NeuroCheck immediately, it will start with unrestricted functionality only when the security key is present.

If the parallel interface of your PC is used by any other device, e.g. a printer, simply insert the security key into the parallel interface, then connect the device to the security key. The security key does not affect these signals.

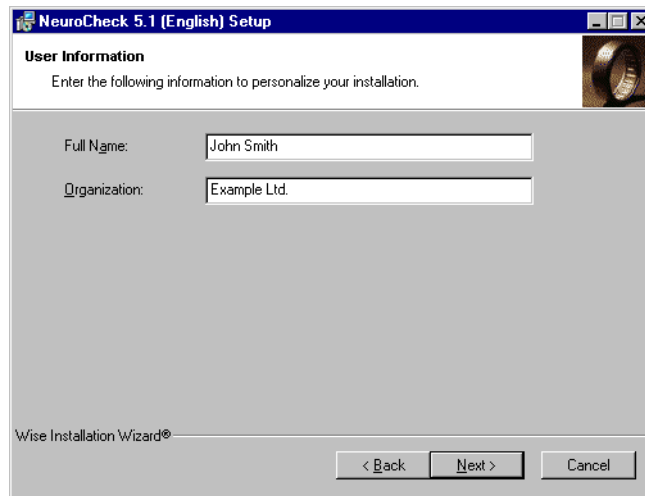
Installation Procedure

To install NeuroCheck from a CD-ROM click 'NeuroCheck English' in the CD interface program which is automatically started after inserting the CD-ROM into the CD-ROM drive of your PC (if CD autostart is deactivated on your system, please start the NCHECKCD program from the root directory of the CD). The installation program will automatically detect your operating system and install the correct files.

The welcome screen of Setup prompts you to close other Windows applications first. This is recommended because some shared resources have to be installed into the Windows system directory along with NeuroCheck. If no other programs are running, you can continue by choosing Next or pressing the RETURN key.

Determining User Information

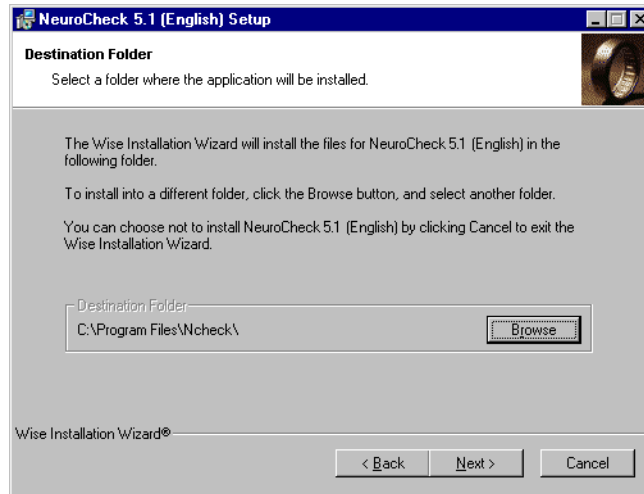
The setup reads user information from your system's registry. If the Windows system has not been installed using your name, you may have to change the information in this dialog box.



Choosing the Installation Directory

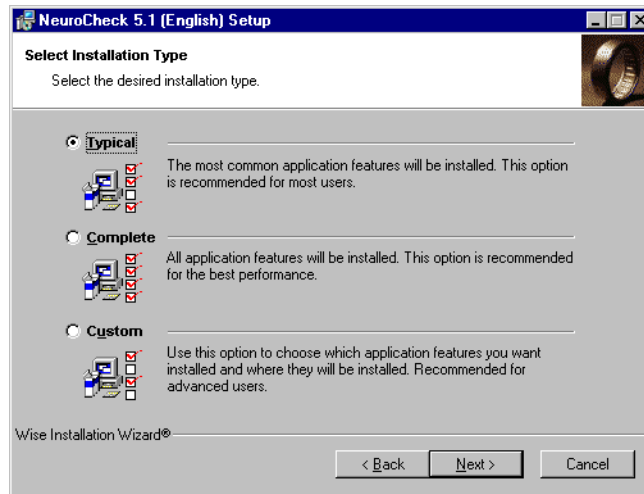
In the next step, the setup asks you whether you want to install NeuroCheck into the standard directory `\Program Files\NCheckXX` on the Windows system drive, where XX stands for the NeuroCheck version. You can select a different directory by choosing **Browse**, but we recommend that you simply confirm the default selection which is based

on the Windows setup guidelines. To confirm the default selection, simply choose **Next** or press RETURN.



Selecting the Setup Type

In the following dialog box you can choose from several types of setups by selecting the appropriate button. The Standard setup installs NeuroCheck with the typical components. The Complete setup installs all components. The Custom option lets you decide, which files to install.



Selecting Additional Components

If you selected the Custom setup option, the following dialog box will appear in which you can select the components to be installed.



Features shown in white will be installed completely, including all subfeatures they may have.

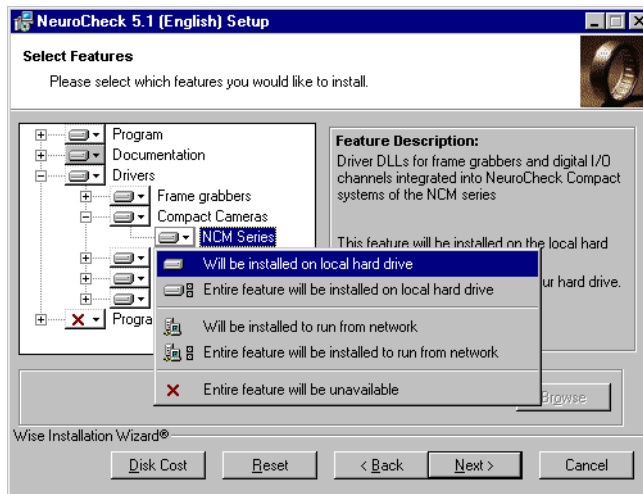


Features shown in gray will be partially installed, i. e., some of their subfeatures are selected for installation, others not.



Features marked with an X will not be installed at all; this entails that none of their subfeatures will be installed, either.

The / icons let you open and close the individual feature branches. Clicking the icon of a feature opens a context menu where you can select whether the feature – possibly including its subfeatures – is to be installed on a local drive of your machine or somewhere in the network. The last menu command lets you prevent installation of the feature entirely. Thus you can select individually which components are to be available. The Disk Cost button allows you to check to space requirements of your current selection at any time.

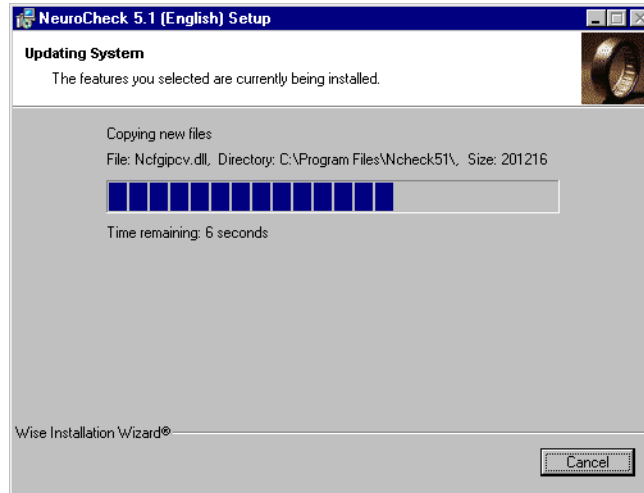


Selecting individual features is especially interesting for the installation of hardware drivers as shown in the image. You can configure the installation in such a way that it will install only drivers for the hardware that you are actually using. Of course you can use the maintenance capabilities of the Windows Installer at any time to add or remove features at a later date. You only need to open the Add/Remove Programs utility from the Windows control panel and select „NeuroCheck 5.1 (English)“.

When you have made your selection, click the Next button or press the enter key.

Copying Files

When all settings have been made, Windows Installer will ask you one final time whether you want to continue the installation or change your settings. If you confirm with the Next button, the Windows Installer will copy the NeuroCheck files to the destination path. A progress dialog informs you about the steps currently being taken.



Completing the Installation

The Windows Installer then informs you about completion of the installation in a final dialog box. After confirming this dialog box with the Finish button, you can start NeuroCheck like any other Windows program from the Start menu. The Start menu also contains entries for the current readme, the online help and other installed documentation.

Note. If the setup program was unable to update specific files because they were in use during installation, it will ask for a reboot here. You should restart your system before starting NeuroCheck to guarantee that all files are current.

Additional Tools

Microsoft Internet Explorer

Some of the new features of NeuroCheck 5.1 use Microsoft Internet Explorer as a functional component, e. g. the new HTML status messages and check routine descriptions. You can use this functionality only if the Internet Explorer is installed. Version 5.0 or higher is recommended. An English version of Internet Explorer is located in the `Extra\InternetExplorer\English` directory on the CD.

Note. If using Internet Explorer is undesirable in certain production environments, the entire image processing functionality of NeuroCheck can be used without it. You will then have to start NeuroCheck with the /NOIE command line option.

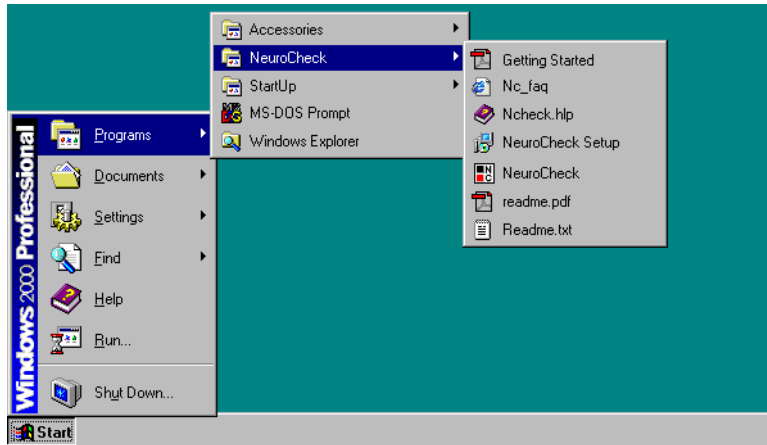
Adobe Acrobat Reader

Parts of the additional documentation require Adobe Acrobat Reader 4.0 or later. A current installation is located in the Extra\Acrobat\English directory.

After Installation

Start Menu

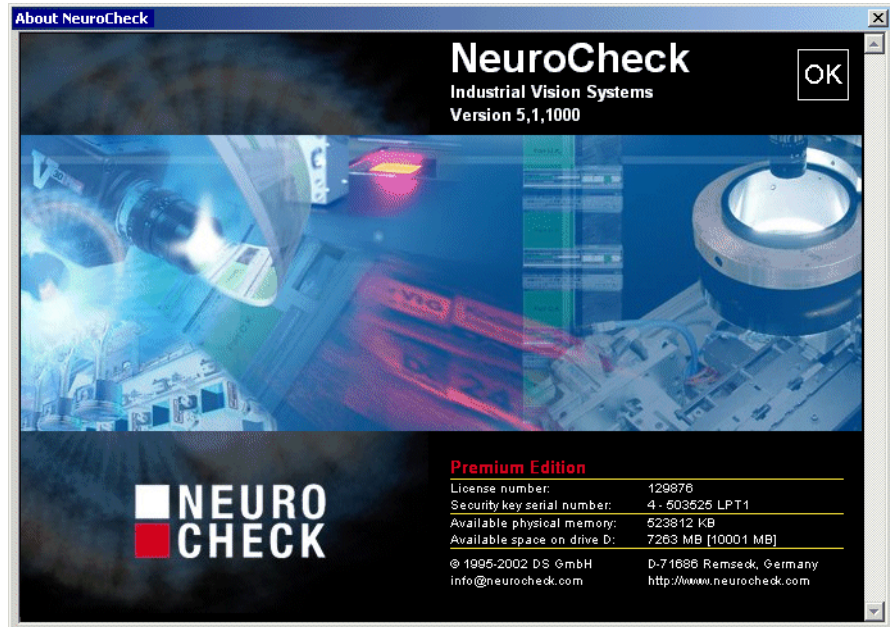
Now you can run NeuroCheck and the documentation files belonging to NeuroCheck from the NeuroCheck submenu in 'Start\Programs'.



The installation program also creates a desktop shortcut which you can use to start NeuroCheck directly.

A First Test

Start NeuroCheck from the Start menu. From the NeuroCheck intro screen you can load the demonstration check routine, browse through a tutorial or view the information dialog box:



If this dialog box does not indicate the license level you acquired (Runtime, Professional or Premium), the security key is probably not attached or the dongle drivers have not been installed. You can easily verify the presence of the dongle in the NeuroCheck status bar. If the dongle was detected successfully, the status bar will show a small icon shaped like the security key.



If this icon is missing, exit NeuroCheck and connect the security key to the USB or parallel port of your PC, as described in section „Before Installation”. After starting NeuroCheck again, the box should display the appropriate license and serial number.

Executing a Sample Check Routine

From the intro screen, you can directly enter the demonstration check routine. Its start screen will give you further information about getting a first impression of NeuroChecks capabilities.

Hardware Configuration

Installing Special Hardware Components

Please refer to the manuals supplied by the hardware vendor for information on installing special hardware components, such as frame grabber and digital I/O boards.

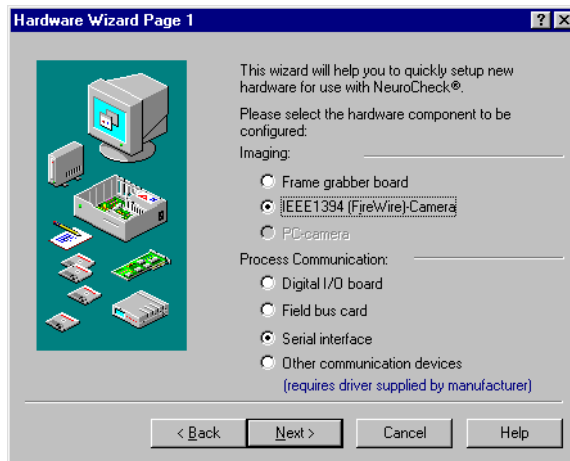
Setting up Hardware

Before you can use cameras, frame grabber boards, digital I/O boards, field bus boards or the serial interface from NeuroCheck, you have to configure NeuroCheck accordingly. This section demonstrates the setup process for a FireWire camera.



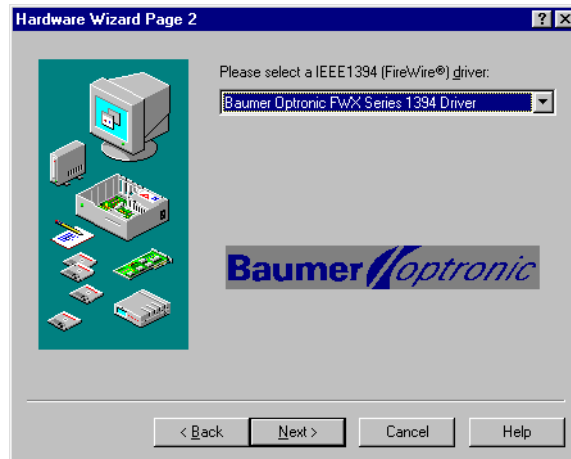
Start NeuroCheck, switch to manual mode using the depicted icon and choose **Device Manager** from the **System** menu. In the (currently completely empty) device manager click **New**.

On the first page of the hardware wizard, which will help you setting up your hardware, select **IEEE1394(FireWire) camera** and click **Next**.

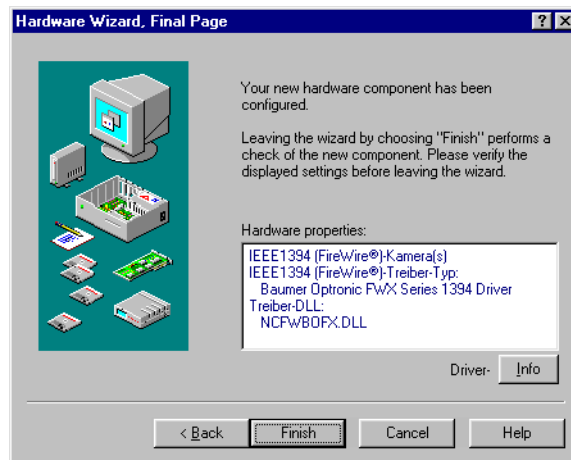


The second page will differ depending on the type of device selected on the first page, but the basic functionality is always identical. Select from the topmost list box the make and model of the hardware you want to install. Additional control elements are used to set up

parameters of the hardware. Only in rare cases will it be necessary to change the default settings.



The final page of the hardware wizard summarizes the setup information. Choosing **Finish** sets up the selected hardware device after checking for its presence.



Using the Info button, you can easily check the installation of the required low-level drivers for the selected board.

Removing NeuroCheck

NeuroCheck supports the standard uninstall and maintenance procedures of Windows. Like any other Windows application, you can remove NeuroCheck from the control panel. Please refer to the Windows documentation for further information. Uninstall may inform you that it was unable to remove some components. This is due to the fact that NeuroCheck installs shared resources that may be used by other programs and might therefore not be safely removed. It is also possible that they are within the NeuroCheck directory which the installation program did not create and which the uninstall program therefore does not know how to deal with. In this case, again, the NeuroCheck installation directory will remain in existence after deinstallation.

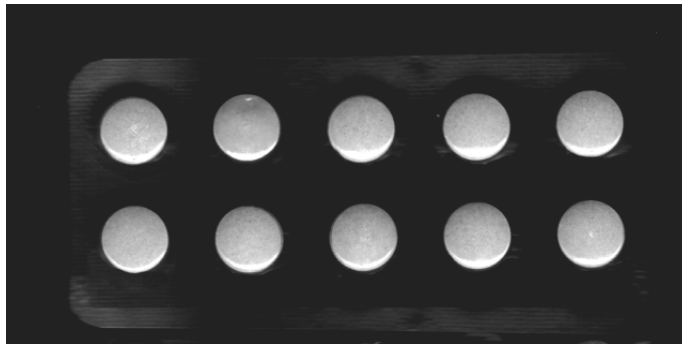
CHAPTER 4

Creating a New Check Routine

This chapter gives you an introduction into configuring visual inspection programs with NeuroCheck. In a standard installation of NeuroCheck, you will find the complete check routine as `TUTO_1.CHR` in the `EXAMPLES` directory below the installation directory.

Inspection Task

Below you see an image of a blister with ten pills. The inspection task is to determine whether exactly ten pills are present.



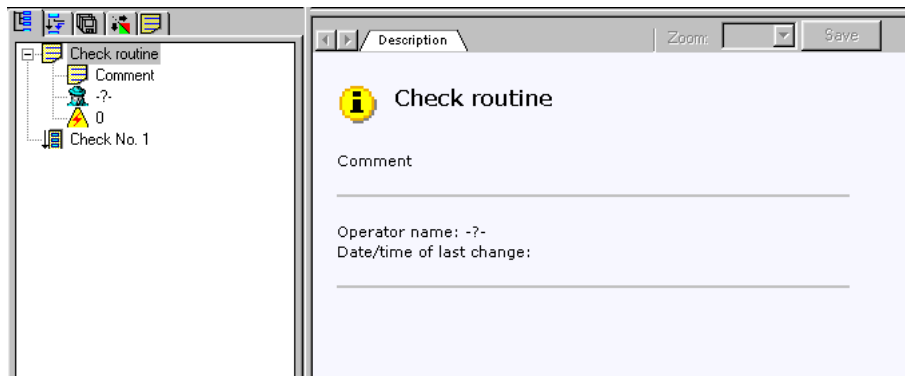
The complete solution of a visual inspection task is encapsulated in NeuroCheck check routine. Such a check routine can consist of several individual checks, inspecting different aspects of a work piece. In this case only one criterion has to be checked, therefore the check routine will contain only one check.

Creating the Check Routine



In the intro screen NeuroCheck shows when Internet Explorer is installed as well as in the normal manual mode you can create a new check routine by choosing **New** from the **Check Routine** menu or by clicking the depicted icon.

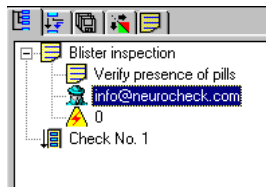
NeuroCheck then shows the manual mode screen with an empty check routine. It will automatically create a standard description for the check routine in HTML format – again provided that the Internet Explorer is installed.



Check Routine Description



First you should enter a description for the check routine in order to properly identify it later. Click the first line of the check routine tree view, reading „Check routine“, once with the left mouse button to highlight it, then again to switch to edit mode. A cursor appears, allowing you to enter a new name for the check routine. Enter „Blister inspection” and confirm with the RETURN key.



Proceed in the same way with the following lines to enter „Verify presence of pills” as the comment in the second line, your name as the operator in the third line. The lightning icon in the fourth line represents the identification number used to switch check routines in automatic mode and will not be used in this tutorial. Now the edit tab should look as shown in the figure. Note that these changes are immediately reflected in the HTML-page in the right window pane.

Saving the Check Routine



Before you start working on the inspection task, you should save what has been created so far. From the **Check Routine** menu choose **Save** or click the depicted icon. The familiar Windows file selection dialog appears. Enter a name for the check routine, e.g. Tutorial 1. You do not need to enter a file extension, this is done by NeuroCheck. Confirm with OK. You will now see the file name appear in the title bar of the NeuroCheck window and the date and time of the save operation in the right window pane.

Creating and Editing Checks

As mentioned before, a check routine is made up of individual checks, performed independently of each other. A first check is automatically created together with the new check routine. Additional checks can be created by choosing **New ► Check** from the **Edit** menu or from the context menu opened by clicking the background of the tree view with the right mouse button.

The title of the check itself can be edited in the same way as that of the check routine. The title of a check has a special significance. Over time you will repeatedly encounter inspection problems very similar to one you already solved. NeuroCheck can import complete checks from other check routines so that existing solutions can be re-used. Entering a meaningful title helps identifying such “library checks” for importing.

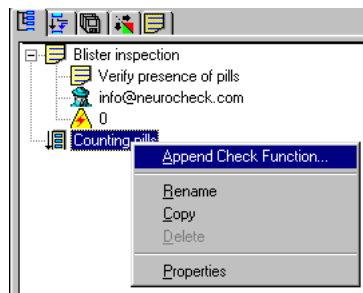
Image Acquisition

Up to now the whole check routine consists of framework only, it does not do anything useful. All the work in a check routine is done by so-called check functions. We will now add the first check function to our check routine in order to provide the check with an image to be inspected. Usually this image will be captured by a frame grabber from a camera, then transferred to NeuroCheck for processing.

Capturing and transferring are separate processes which allows for greater flexibility in selecting and configuring image sources. We will skip the capturing here so that you can work through this example without the need for a camera, frame grabber or test piece.

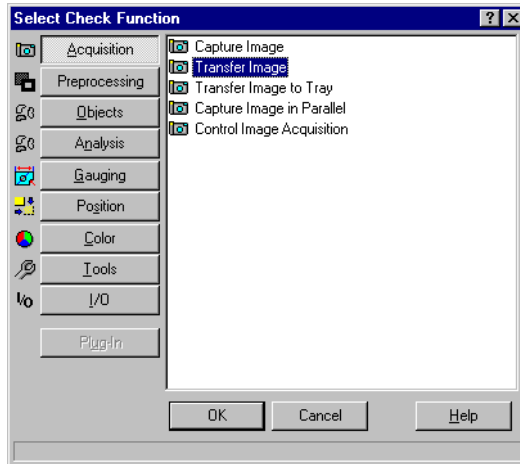
Transferring the Image

The first check function to be added to the check is therefore function **Transfer image**. Choose **New ► Append Check Function** from the **Edit** menu or the context menu opened by clicking the title of the check with the right mouse button as in the following image.



Alternatively you can click the depicted icon. The effect will always be the same : the dialog box for selecting a new check function is displayed.

The dialog box contains a separate page for every function category in NeuroCheck. The pages are switched using the buttons on the left of the dialog box. You will find the functions for image acquisition on the **Acquisition** page with the camera icon.



Select function **Transfer image** and confirm with **OK**. Your check will now look like this:



Setting Parameters

Now you have to tell NeuroCheck what image to use. This means you have to set parameters for function **Transfer image**. In the standard configuration after installation, NeuroCheck will automatically display the parameter dialog of the function after appending. If this option has been switched off on the **User Interface** page of the **System Options** dialog, you can use one of the following methods:



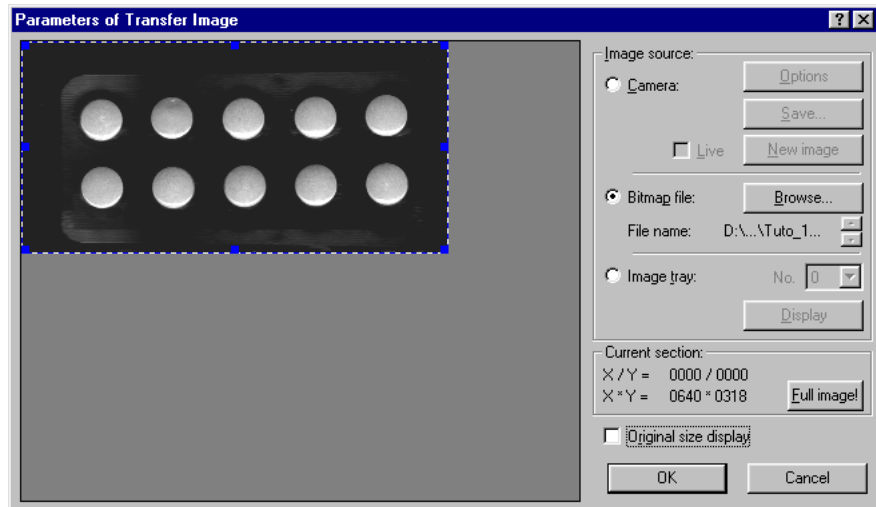
If the function is selected as in the above image, you can click the depicted icon or choose **Parameters** from the **Check Function** menu.

The second method is to click the name of the function with the right mouse button and choose **Parameters** from the context menu.

The third method is a double click on the function name in the edit tab.

Parameters for Image Transfer

The following dialog box will appear, except that it does not display an image yet:



Select the Bitmap file option, then use the **Browse** button to select the file TUTO_1 . BMP from the EXAMPLES directory within the NeuroCheck installation directory. Confirm your selection with OK.

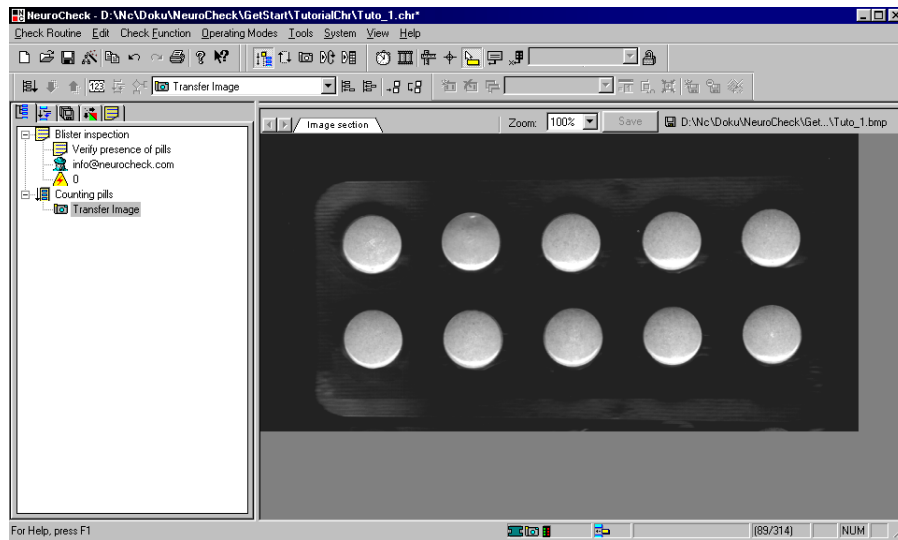
The blue frame indicates the image section actually read. It can be moved by dragging it while holding the left mouse button down. Dragging one of the marks on the edges changes the size of the frame. You can also use the Full image button to load the entire image. Then leave the dialog box with OK.

Executing the Image Transfer



You can run the check routine up to this point by selecting function **Transfer image** in the tree view with a mouse click and choosing **Execute** from the **Check Function** menu or clicking the depicted icon. You can also click the function name in the check routine tree view with the right mouse button and choose **Execute** from the context menu.

NeuroCheck then executes the check routine up to this point and displays the result in the right window pane, i.e. the section loaded from the image. The NeuroCheck window now should look approximately as in the following image:



Now you should save the check routine again by choosing **Save** from the **Check Routine** menu or the depicted icon. The check routine is saved under the previously assigned file name. The menu command **Check Routine/Save As...** allows you to save the check routine under a new file name.

Regions of Interest



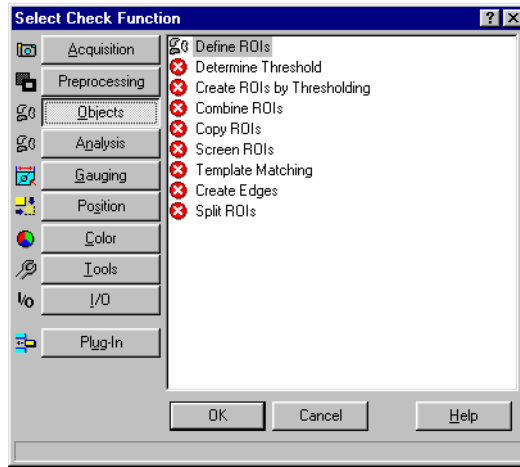
The pills are objects within the image. All functions dealing with objects belong to the function categories marked with the icon shown here and require a *region of interest* to work with. Therefore, we have to set a region of interest now. Proceed as before to append a new check function to your check. This time, select the **Objects** page in the **Select Check Function** dialog.

Unavailable Functions



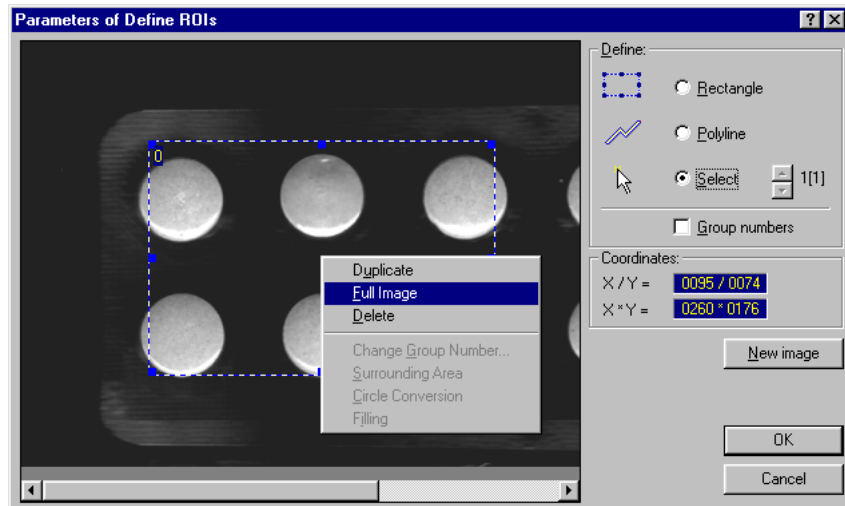
You will notice that a lot of functions on this page are marked with the red icon shown here. These functions cannot be appended or inserted into the check at that point. If you select such a function, the status line of the dialog box will show an explanation as to why the function cannot be used at the moment. Here the reason is that all these functions

require at least one region of interest to be defined. Therefore, the only function currently available from this group is function Define ROIs. Append it to your check routine.



Define Region of Interest

We will simply search the whole image for the pills. This means that the region of interest will comprise the entire image. Open the parameter dialog of function Define ROIs and select the Rectangle option. In the graphics panel on the left, draw a rectangle by dragging the mouse with the left mouse button pressed. Switch to Select mode using the radio buttons on the right, then click the rectangle with the right mouse button and choose **Full image** from the context menu. The region of interest will then cover the entire image section read into memory.



Thresholding

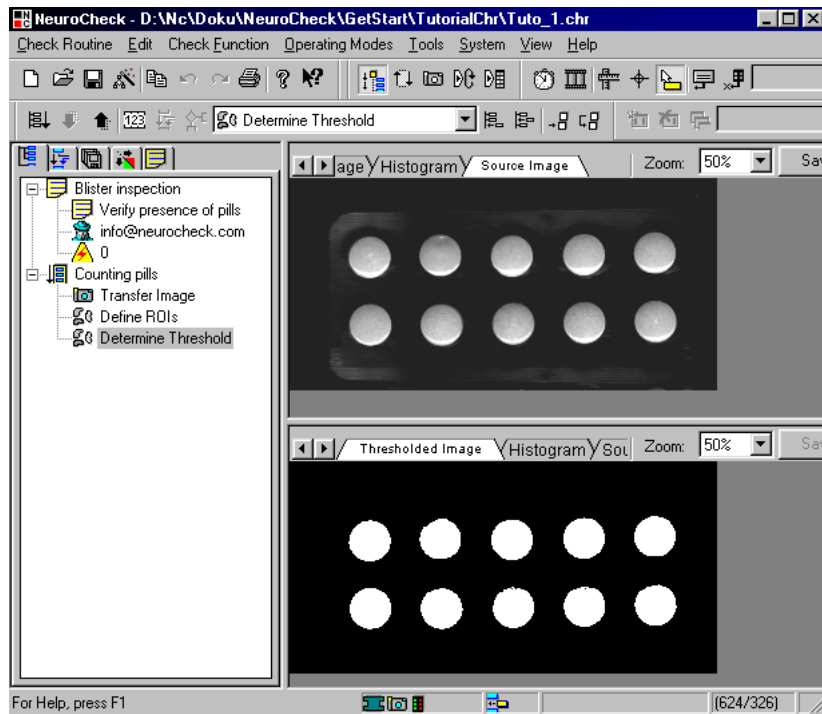


The pills contrast well with the background. Therefore, a simple thresholding operation will suffice to isolate the objects in the image. First a threshold has to be computed. This is the task of function **Determine threshold**. Append this function to the check. You will find it on the same page as function **Define ROIs**.

Executing the function removes all gray shades from the image, leaving only black and white areas.

Display Options

A closer look at the right window pane of the NeuroCheck window will reveal a double frame on top. If you drag the lower frame downward, holding down the left mouse button, you will see a histogram of the image in the upper pane, the thresholded black and white image in the lower pane. But function **Determine threshold** offers even more display options. There are several control elements on the top border of each pane, from which you can select the display option to be presented in the corresponding pane and the zoom level. Click the **Source image** tab above the upper pane and select a zoom factor of 50% for both panes. Now the NeuroCheck window should appear as in the following image, allowing you to compare the original gray level image to the thresholded binary image.



In addition to these options each pane has a context menu opened by clicking the right mouse button within this pane. From this menu you can transfer the image displayed in the respective pane to the Windows clipboard, from where you can paste it to any Windows application, e.g. to document your check routine.

Note. The context menu of the left window pane with the check routine tree view also has a **Copy** command. There, the effect is to transfer a text listing of the check routine, i.e. the check function sequence, to the clipboard from where it can be pasted to a word processor for documentation purposes.

A final note on the display: the background of the NeuroCheck result window pane can be configured. Choose **Options** from the **System** menu, go to the **Color** page and select your preferred color for the gray level image background.

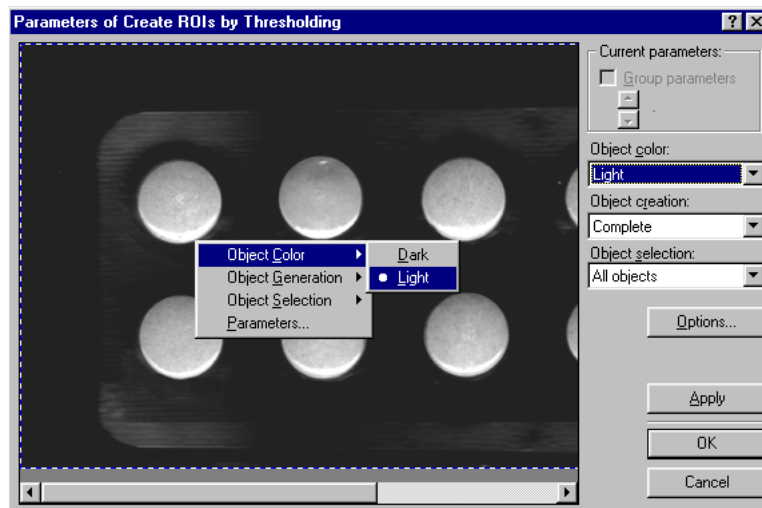
Searching for the Pills



The pills are clearly separated from the background in the thresholded image. We can now isolate them as objects from the image scene. Append function **Create ROIs by Thresholding** to your check routine. Again, you will find this function on the **Objects** page of the **Select Check Function** dialog box.



In the parameter dialog of **Create ROIs by Thresholding** set the options as in the following image in order to find all bright objects. You can either click the graphics panel with the right mouse button and choose **Object Color ▶ Light** from the context menu or use the corresponding list box on the right of the dialog box.



Running the check routine up to this point separates all ten pills as individual objects from the background. Now their number has to be checked to complete the solution of this inspection task.

Checking the Number of Pills

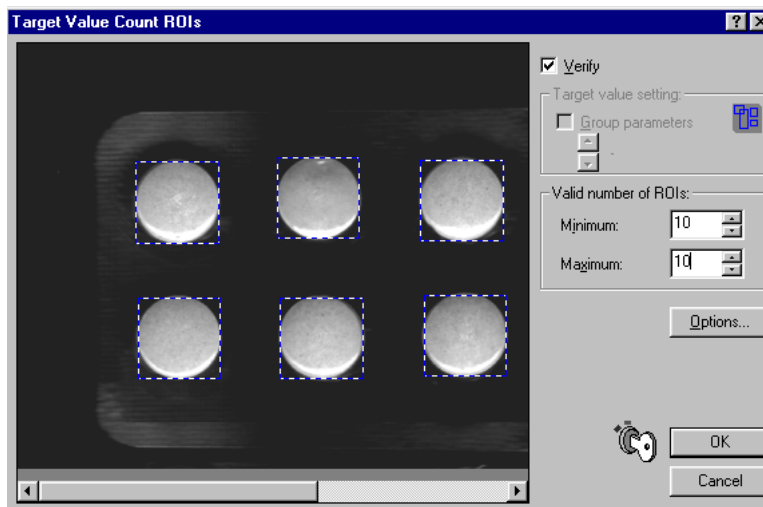


Append function Count ROIs to the check routine. You will find this function on the **Analysis** page of the **Select New Check Function** dialog box. Since this function can be used to verify the compliance of an existing object configuration with prescribed values, it has a target value dialog instead of a parameter dialog (though there are functions having both).



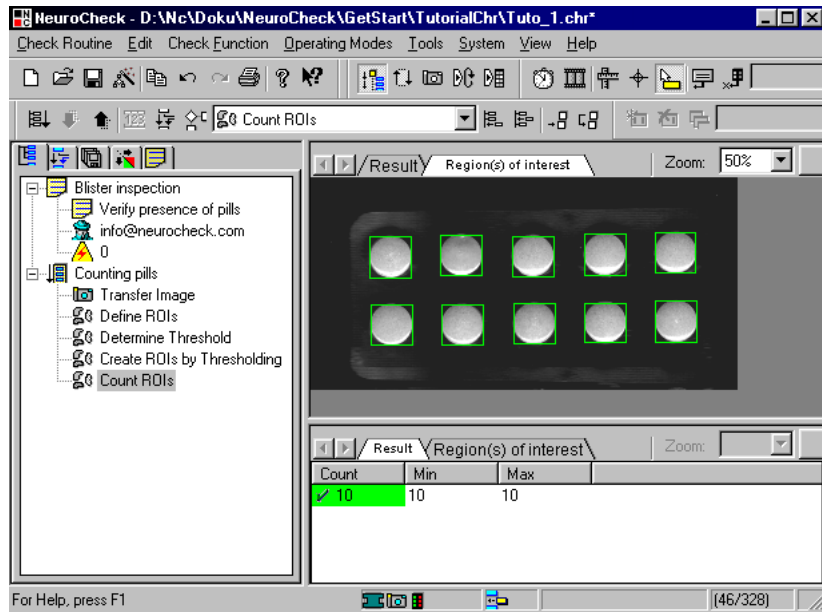
Open the target value dialog by double-clicking the function or by clicking the icon on the left or by choosing **Target Values** from the **Check Function** menu or the context menu.

Activate the **Verify** option (the function can be used simply to count objects, without deciding, whether the number is correct or not). Enter „10“ for the minimum as well as for the maximum value, because there have to be exactly ten pills present.



Confirm with **OK** and execute the check routine. NeuroCheck informs you that the work piece is **OK** since it contains the required number of objects. The screen shot below shows

the default display appearing automatically, if the right window pane was horizontally divided as described above in section „Thresholding”.



With this final step the inspection task has been solved. Again, you should save the check routine.

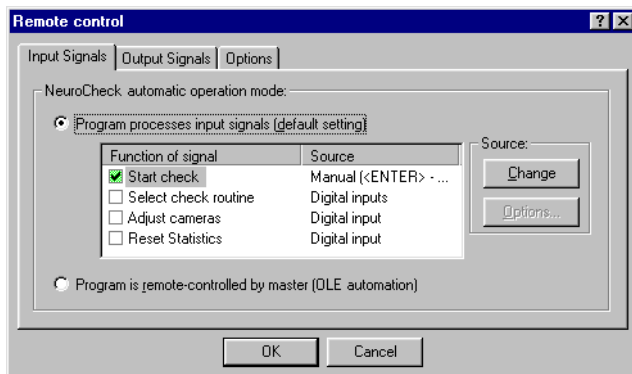
Automatic Execution

Immediately after saving the completed check routine you can have it executed in automatic mode. On the other hand, this means that you can reconfigure an automated visual inspection anytime, having all the features of the manual mode user interface at your command.

Triggering Check Routine Execution

In a real-world production line inspection system, check routine execution in automatic mode will typically be started by an external signal, i.e. via digital inputs or serial interface. Here we will trigger the start manually. We have to configure this first since in its standard configuration after installation, NeuroCheck will not react to start signals.

Choose **Remote-Control** from the **System** menu and activate the Start check signal on the **Input Signals** page by clicking the check box in front of the signal designation.



In the standard configuration, the Source column on the right will show a manual operation using the ENTER key. If not, you can change this using the Change button. These settings affect the system as a whole and can therefore not be made while the system is running in automatic mode.

Switching to Automatic Mode

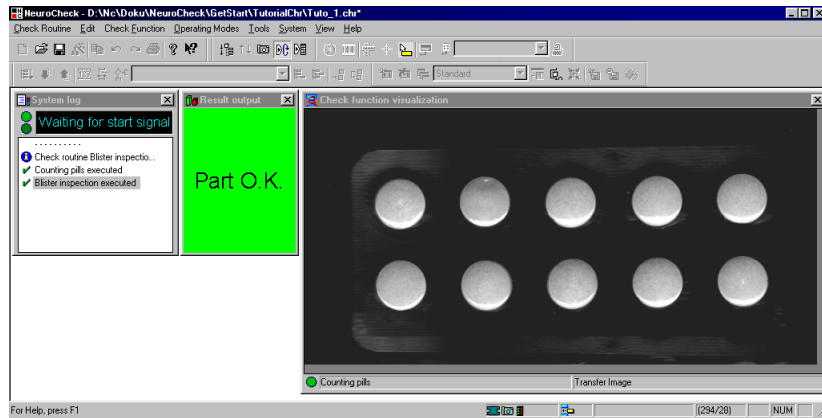


Choose **Automatic** from the **Operating Modes** menu or click the depicted icon in the mode bar to switch to automatic mode. In NeuroCheck's standard configuration, you will receive a warning message about image transfer from file. You can simply confirm this message. It is intended to prevent a production check routine from accidentally checking stored images instead of current camera images of test pieces.

Automatic Mode Screen

After switching to automatic mode, NeuroCheck displays a default screen layout. When you have made the remote-control configuration as described above, NeuroCheck will execute the check routine once after you press the ENTER key and display some informa-

tion in the windows on the automatic mode screen. The following figure shows the default configuration of the automatic mode screen.



The automatic mode display can be configured by choosing **Configure Automatic Screen** from the **Operating Modes** menu or clicking the corresponding icon on the mode bar. In this operating mode you can add, resize or delete windows on the automatic screen and set window properties, like the zoom factor to be used.

End Automatic Mode



Automatic mode is ended by choosing **Manual** (or any other mode) from the **Operating Modes** menu.

From Here

Now you have a first impression of how to work with NeuroCheck to solve visual inspection tasks. To get a deeper understanding of the structure of the program and an overview of its capabilities, you should work through the *Training Course* included with the package or book a training at your local NeuroCheck support office.

Index

A

Application
 bar code identification 10
 color processing 12
 DataMatrix code identification 10
 gauging 11
 image comparison 11
 presence verification 10
 robot guidance 11
 surface inspection 12

B

Bar code identification, see also Application, bar code identification 10

C

Camera 15, 25, 37
Check function 13, 17, 37
Check routine 13–14, 17, 31, 35–36, 39–40, 43–45
Clipboard 43
Color processing, see Application, color processing 12
Context-sensitive menu 43

D

DataMatrix code identification, see also Application, DataMatrix identification 10
Digital I/O board 32

F

Frame grabber 32, 37
Frame grabber board 25

G

Gauging, see also Application, gauging 11

H

Help 19

I

Image acquisition 37
Individual check 13, 35
Installation
 components 28
 directory 26
 previous 26

M

Mark inspection, see also Application, image comparison 11
Master control computer 15, 25
Measurements 10
Measuring, see also Application, gauging 11
Modes of operation 14
 automatic mode 15, 46–47
 automatic screen configuration 15, 46
 live image mode 15
 manual mode 14

O

OLE automation 15

P

PLC 15, 25
Positioning, see also Application, robot guidance 11
Presence Verification, see also Application, presence verification 10
Print quality inspection, see also Application, image comparison 11

Q

Quality management 9

R

Region of interest 40–41
Robot guidance, see also Application, robot guidance 11

S

Sample files 25
Security key 25, 31
Serial interface 9, 25, 32
Setup 26
Start Menu 30
Surface inspection, see Application, surface inspection 12
System requirements 25

U

Uninstall 34