

FSI Machine Vision is a Division of FSI Technologies, a trusted manufacturer of factory automation products since 1959. We draw from our full range of products and services to offer machine vision systems & solutions under our Assured Path to Success™ (APS™) program. These products and services include:

Machine Vision Systems:

- CVS-700 Vision Systems powered by NeuroCheck® (including the FireCube™)
- CVS-500 Smarter Cameras™ powered by NeuroCheck®
- CVS-074 & CVS-100 family DSP based Smart Camera vision systems
- CVS-800 systems with application-specialized software engines

FSI Machine Vision Lighting products - all seven families

- LED
- Fiber Optic
- Laser (Structured)
- High Frequency Fluorescent
- Xenon strobe
- Halogen / Incandescent

FSI Machine Vision lenses and optics

- CLA general use lenses
- CLC higher accuracy lenses with locking and filter mount provisions
- GLG engineered gauging accuracy lenses
- CLTE telecentric lenses
- CLT telecentric gauging lenses
- Specialty lenses, filters and accessories

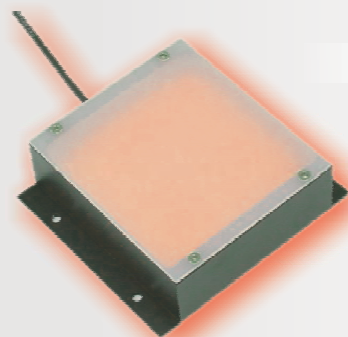
Specialty Products and Accessories

APS™ Program - Related Services and Expertise

Training, Consulting Services & Feasibility Study Services

FSI Assured Path to Success™ Solutions Powered by NeuroCheck

This combination of NeuroCheck, CVS-700 architecture, and our APS™ program provides the gold standard for application success, power, versatility, low ownership costs, and long-term ownership viability and is the most widely chosen by our customers. The cornerstones of this combination are the FSI Assured Path to Success™ (APS™) program, and the architecture of CVS-700 systems powered by NeuroCheck.



FSI Assured Path to Success™ (APS™) Program

The APS™ program leverages extensive additional benefits from a very low additional cost. It has had a 100% machine vision application success rate in a field where 60% is the norm. Key elements of the APS™ program include:

- True *factory level* involvement in the crucial and difficult areas of the application.



- A scope that is broader than equipment-only, and narrower than turnkey, offering the best of both worlds. Optional expansion to turnkey scope is available through our network FSI factory trained Solution Providers.
- *Factory level* creation of example solutions for the most challenging areas of the application.
- A thorough, written roadmap to applications that covers project conception through long-term ownership.

The NeuroCheck Concept + FSI CVS-700 Architecture = Customer Benefits

This concept utilizes cross-platform standardization using a universal machine vision software engine, providing these capabilities and benefits:

Powerful

- Includes nearly every known machine vision tool, including many unique to this product
- Available in nearly every imaginable hardware configuration. 32 cameras, area scan, line scan, infrared & X-Ray, 128 I/O.
- Extensive factory-floor administrative and deployment tools
- Extensive interconnectivity including full PC architecture ports and data objects
- Extensibility through plug-in support, OLE automation, and open system documentation
- Includes an additional set of administrative and interconnectivity tools inherent to its PC / Windows architecture, plus removable mass storage media, and a wide choice of economical peripherals.
- Internal storage for 50,000 images or programs.

Standardized

- Machine vision tools are the same in all versions
- Scalability is provided without violating standardization
- Single product that spans hardware configurations and time

Trustworthy

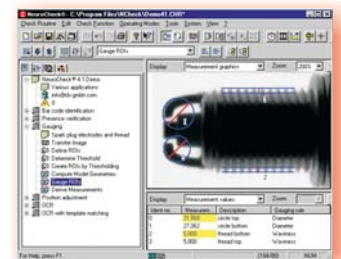
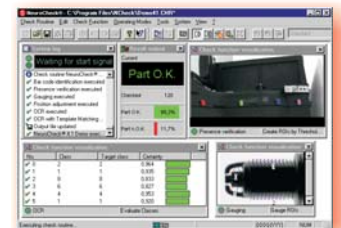
- Worldwide standard with thousands of industrial deployments.
- NeuroCheck, with 12+ years of factory-floor deployment
- FSI, a trusted manufacturer of factory automation products for over 46 years

Friendly

- Genuinely user friendly. All functions fully integrated for automatic passage of results between functions
- Fully integrated at a single graphic user interface, with dialog boxes for all configuration of all tools and functions

Scalable

- Commercially scales from 1-piece Smarter Camera™ system through high power 32-camera and line-scan CVS-700 systems in ways that do not affect the engine or tool set.



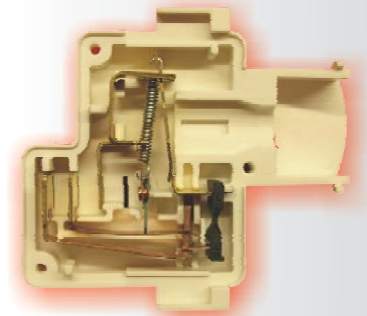
Protection Against Obsolescence

- PC architecture rides the wave of PC technology evolution instead of becoming obsolete. Hardware advances do not obsolete the software.
- Familiar Windows user interface and administration reduces and protects learning curve investment
- 12 + year proven track record of leading-edge evolution without obsolescence

Application-Specialized FyrEye™ Systems

While all of our solutions are specialized to the application, FyrEye systems are defined by the application prior to the application review. These include these 8 system types:

- Assembly verification
- Gauging
- Surface Analysis
- Can & bottle inspection systems
- Packaging inspection systems (cans, bottles, cartons)
- Profiled wood product inspection systems
- Metallic part inspection systems (formed, cast, machined)
- Molded plastic part inspection systems



Consulting Services

Extensive expertise in a wide range of machine vision, project management, scientific and engineering disciplines. Popular uses of these services are specification development, rescue of non-FSI projects, and fundamental R&D. Expert specification development pays for itself many times over; it often speeds a project up by a full year, or reduces machine vision costs by tens of thousands of dollars.

Put our expertise and products to work for you!

Please contact us or visit us at www.fsinet.com, for in-depth publications, demo software, or to start a review of your application. In addition to extensive *factory level* technical involvement, our North American team of local representatives and solution providers stands ready to help make your application a resounding success in every respect.



FSI Technologies

668 Western Ave. Lombard, IL 60148-2097 TEL: (630) 932-9380 FAX: (630) 932-0016
(800) 468-6009 www.fsinet.com info@fsinet.com